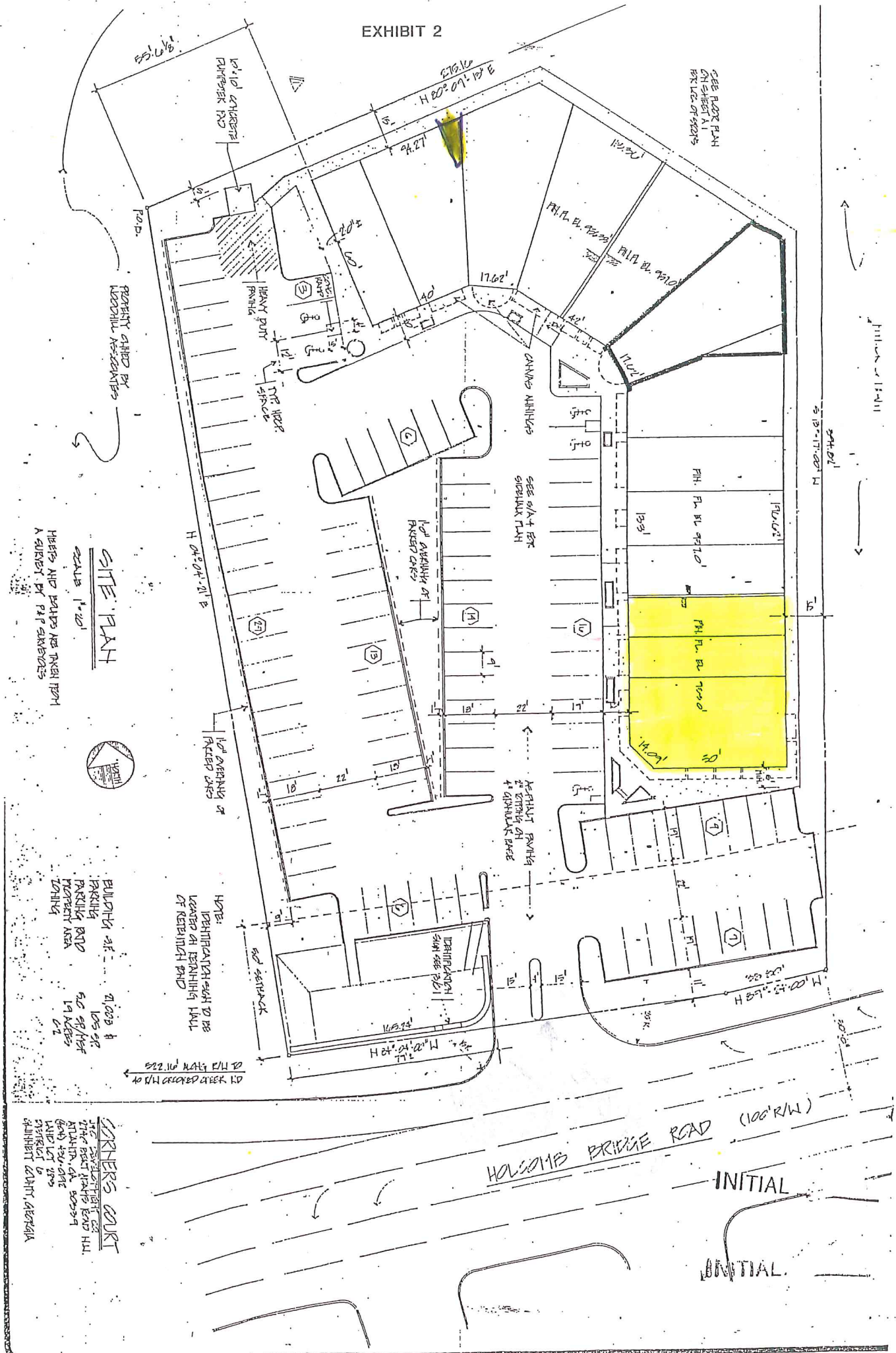


EXHIBIT 2



SEE FLOOR PLAN ON SHEET A1 FOR LAYOUT OF SECTIONS

PROPERTY OWNED BY MORTON ASSOCIATES

HEAVY PAINT AND PAINTS ARE TAKEN FROM A SURVEY BY P.A.P. SURVEYORS

SITE PLAN
SCALE 1" = 20'



BUILDING AREA 21,000 sq ft
 PARKING 105 STALLS
 PAVED AND ASPHALT DRIVEWAYS 19 ACRES
 TOTAL 19 ACRES

NOTE: IDENTIFICATION SIGN TO BE LOCATED ON BUILDING WALL OF KENNEL YARD

CORNERS COURT
 THE BEAR GRASS ROAD HILL
 ATLANTA, GA 30339
 AND YOU ARE
 WANTED TO
 VISIT
 MORTON ASSOCIATES

HOLDENS BRIDGE ROAD (100' R/W)

INITIAL
 INITIAL